

MINIMUM PRESSURE VALVE



OPERATION: Installed directly at the downstream from the air oil separator, the Minimum Pressure Valve provides two functions:

- At start-up, the valve stay closed up to the set opening pressure and then opens to maintain a minimum pressure in the air-oil separator assures pressure for lubricating the compressor.
- At shutdown, the check valve close to prevent back flow through the compressor.

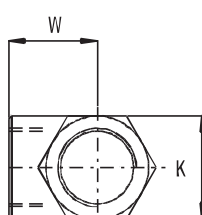
INSTALLATION: The Minimum Pressure Valve are installed at the outlet of the separator or in the discharge line after the separator. It can be connect by thread or flange.

REPLACEMENT: The stress on valve parts depends on compressor application and operating parameters. Inspect the valve and replace, using VMC spare part kit, after 8.000 operating hours.

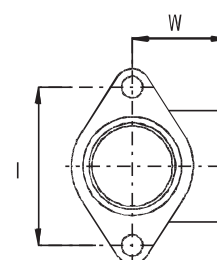
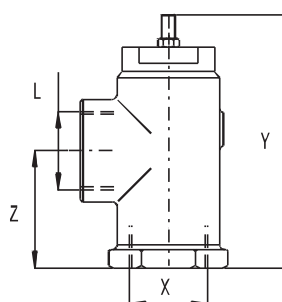
TECHNICAL DATA

THREAD TYPE		G10 ½"	G10 ¾"	G25	G35	G40	G50	G55	G60
Rate Flow fully open	m³/1'	1	1,5	3,5	6	12	22	40	60
Pressure Drop	bar	From 0,03 to 0,2 Bar							
Materials		Housing in aluminium alloy anodized. Internal parts in stainless steel, viton sealings and brass							
Set opening Pressure	bar	From 3 to 5,5. Standard settings 4,5 ± 0,25							
X	Inch	Rp ½"	Rp ¾"	Rp 1"	Rp1"1/4	Rp1"1/2	Rp2"	-	-
Y	mm	86	86	102	128	190	276	281	328
Z	mm	32	32	50	63	58	67,5	114,5	130
L	mm	Rp ½"	Rp ¾"	Rp 1"	Rp1"1/4	Rp1"1/2	Rp2"	Ø80	Ø90
K	Es.	36	36	44	55	70	86	-	-
W	mm	33	33	38	47	60	70,5	126	132
Weight	Kg	0,28	0,28	0,53	0,95	2	3,2	7,5	8

FLANGE TYPE		G25F		G35F	G40F	G50F			
X	mm	-	-	Ø30,5	Ø30,5	Ø50	46	Ø80	Ø82
Y	mm	-	-	-	-	199,5	-	-	-
Z	mm	-	-	42	49	75	67,5	114,5	-
L	mm	-	-	Rp 1"	Rp1"1/4	Ø40,3	Ø60	-	-
I (Inlet Flange)	mm	-	-	67	78	110	105	160	160
I (Outlet Flange)	mm	-	-	67	78	110	105	160	180
Flange Bores		-	-	2	2	4	4	8	8
Weight	Kg	0,28	0,28	0,6	1	3,2	3,2	7,5	8



THREAD



FLANGE

THERMOSTATIC VALVE



APPLICATION: This valve is controlled by a thermostat and will bypass the oil cooler when necessary to achieve and maintain a minimum oil temperature. This process helps protect the compressor during cold weather startups. It is critical to make sure the thermal valve is operating properly during startup as well as when the compressor reaches its normal operating temperature. VMC offered a wide range of thermostat temperature setting.

INSTALLATION: The Thermostatic Valve are installed between the air-end, separator and cooler. The oil filter nipple is included on the Thermostatic Valve. VMC offered a wide range of connection's system.

REPLACEMENT: The stress on valve parts depends on compressor application and operating parameters. Inspect the valve and replace, using VMC spare part kit, after 8.000 operating hours.

TECHNICAL DATA

Size		VTFT27	VTFT27	VT2FT35	VTFT45	VTFT55
Max. Oil Rate Flow	Lt/1'	45	80	140	180	360
Thread Connections	Inch	Rp 1/2	Rp 3/4	Rp 1"	Rp 1" 1/4	Rp 1"1/2
Oil nipples Size		3/4 Gas	3/4 Gas	3/4 Gas	1"1/4	1"1/4
		1-12 UNF	1-12 UNF	1-12 UNF	1"1/2 16UN	1"1/2 16UN
Thermostat Temperature Setting	°C	Three thermostat available: 55-70; 71-85 or 83-95				
Materials		Housing in aluminium alloy anodized. Internal parts in brass and viton sealings.				
A	mm	60,8	60,8	60	60	70
B	mm	95	95	120	120	140
C	mm	107	107	140	180	240
D	mm	50	50	60	70	90
F		M8	M8	M10	M12	Ø10,5
Weight	Kg	0,9	0,9	2,5	2,8	5

